

## Brixton Hill, Brixton, SW2

2 bedroom flat - purpose built for sale

**£625,000**

Leasehold

### Property Details

An outstanding two bedroom, two bathroom apartment with a private terrace, offering breath-taking panoramic views, set within a luxury development. Positioned on the 11th floor, this secure home enjoys exceptional privacy, light and uninterrupted 270-degree vistas taking in some of London's most iconic landmarks. At the heart of the apartment lies a beautifully proportioned open-plan reception, ideal for modern living, entertaining and relaxation. Floor-to-ceiling windows flood the space with natural light, complemented by new wooden flooring (2025). The sleek, fully integrated kitchen is neatly arranged within contemporary cabinetry, finished with Quartz composite worktops and ample space for dining. Sliding doors open onto the private terrace, perfect for al-fresco dining while enjoying some of Brixton's finest views. Both bedrooms are generous doubles with built-in wardrobes, the principal benefitting from an en-suite shower room, while a stylish family bathroom serves the second. Further features include underfloor heating, lift access, residents' gardens, roof terrace, secure bike storage and an ongoing building warranty.

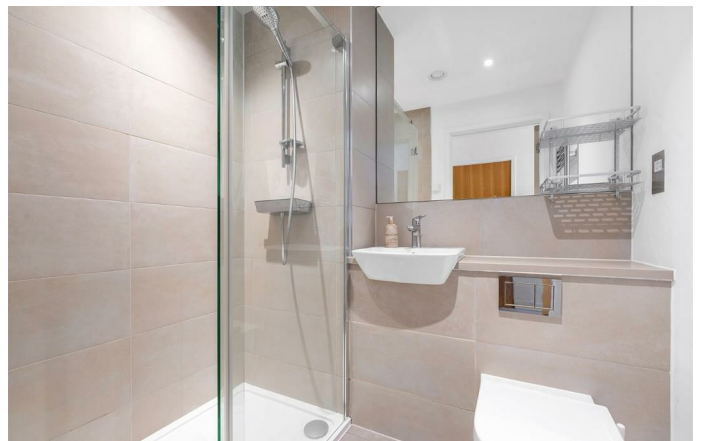
### Features

- Two double bedrooms
- Two bathrooms
- Private terrace with 270-degree panoramic views
- Quietly tucked on the 11th floor
- Underfloor heating throughout
- Lift and secure bike storage
- Additional resident's terrace and garden
- Central Brixton, moments from Brixton tube and Brixton Village
- A short stroll to Brockwell Park
- Chain-free

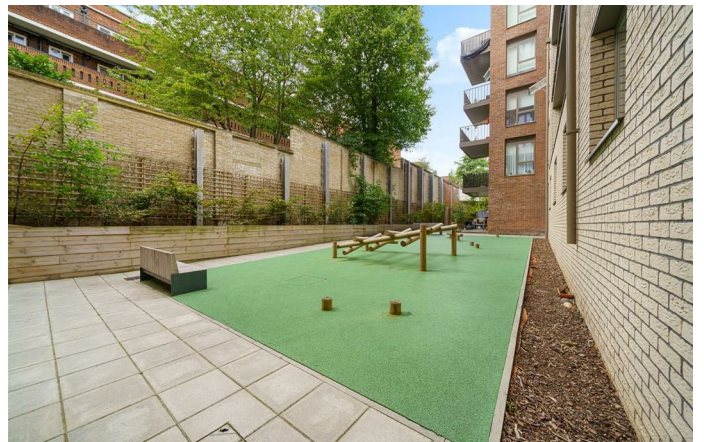
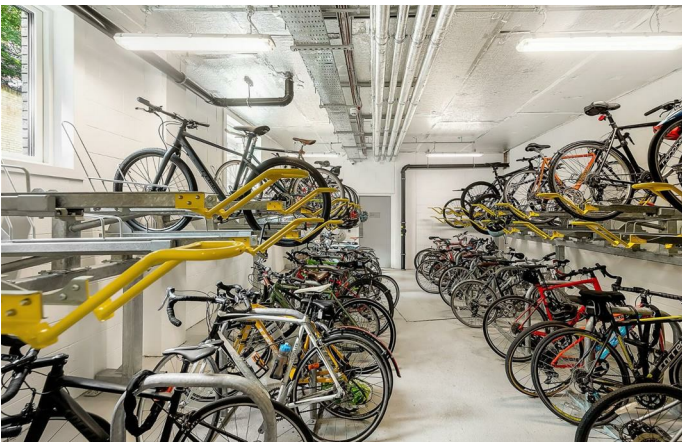
Council tax band D

EPC rating B (85)







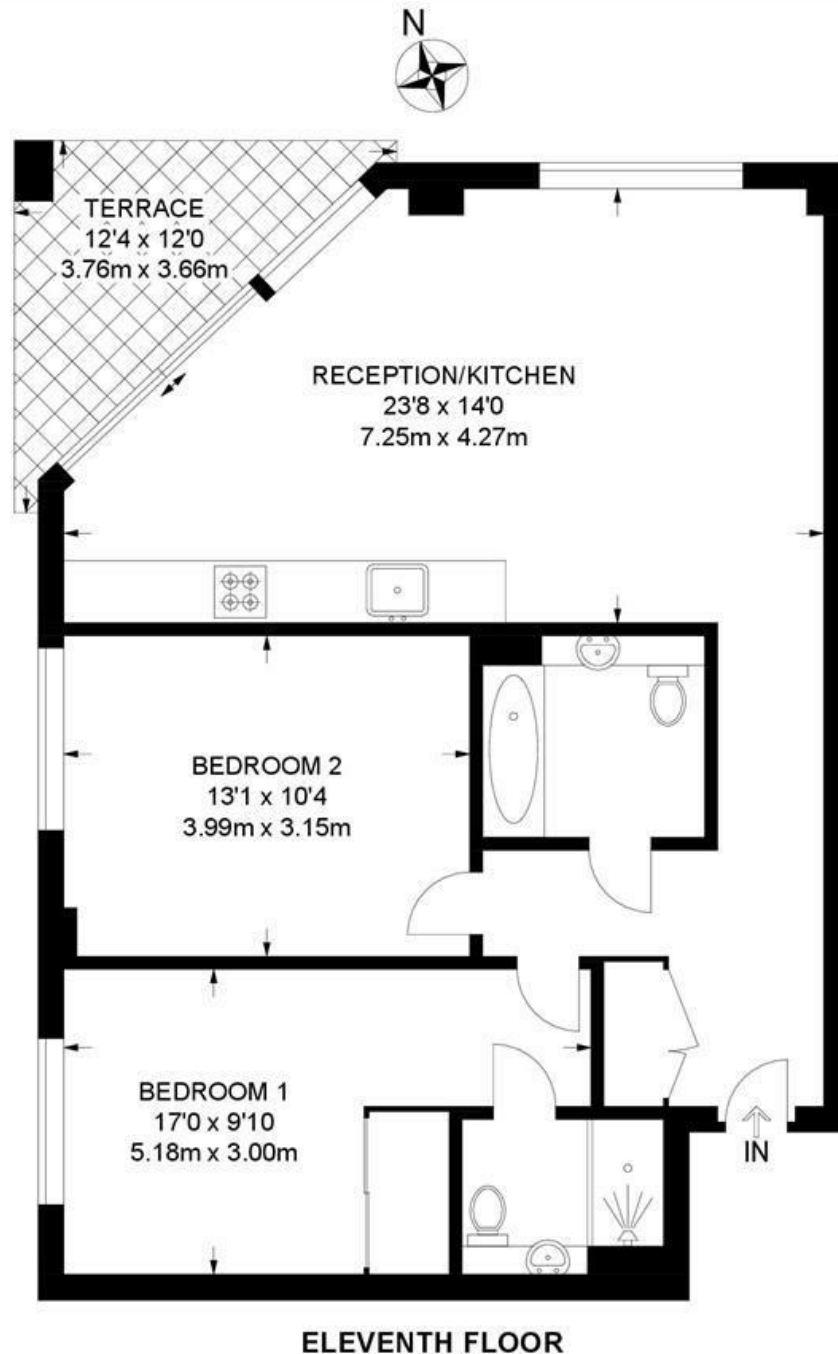




Brixton Hill, Brixton, SW2

## Brixton Hill, SW2 2 Bedroom Flat

APPROXIMATE GROSS INTERNAL AREA: **779 SQ FT / 72.4 SQ M**



While we try our very best, floor plans are produced as a guide only and we take no responsibility for the precise accuracy with which any property is represented.

Brixton Hill, Brixton, SW2

